

WGS 84 POSITIONS can be plotted directly on this chart

# RIVER HUMBER SKITTER CHANNEL

DEPTHS IN METRES  
SCALE 1 : 10000

SURVEYED BY  
Harbour Master, Humber  
ASSOCIATED BRITISH PORTS  
15th to 18th October 2018

Depths are in metres and decimetres reduced to the chart datum given below  
Underlined figures are drying heights in metres and decimetres above chart datum

### TIDAL LEVELS AND CHART DATUM

PLACE	Heights in metres above Chart Datum				Chart Datum and remarks
	M.H.W.S.	M.H.W.N.	M.L.W.N.	M.L.W.S.	
KING GEORGE DOCK	7.6	6.0	2.5	0.7	3.9m below O.D. Newlyn } Being approx. } L.A.T. }
ALBERT DOCK	7.6	5.9	2.5	0.7	
HUMBER BRIDGE	7.2	5.4	1.9	0.3	

Projection: Transverse Mercator. National Grid references are given along borders of chart  
1. Light stars without legends represent two fixed lights displayed vertically and are seen as red to port and green to starboard when proceeding upriver.  
2. Gas pipelines contain flammable natural gas under high pressure. Any ship damaging the lines would face an immediate fire hazard. Mariners must not anchor in the vicinity of the lines.  
Whilst every care was taken in the preparation of this Chart, which is intended to provide Mariners with the data which Associated British Ports possesses at the time of its preparation, ABP gives notice that thereafter, on account of the quickly shifting character of the river bed, no warranty is afforded that such data can be relied upon and, further, no responsibility can be accepted by ABP for any inaccuracy in the Chart or omission therefrom.

### SATELLITE - DERIVED POSITIONS

Positions obtained from satellite navigation systems, such as the Global Positioning System (GPS), are normally referred to the World Geodetic System 1984 Datum. Such positions can be plotted directly on this chart.

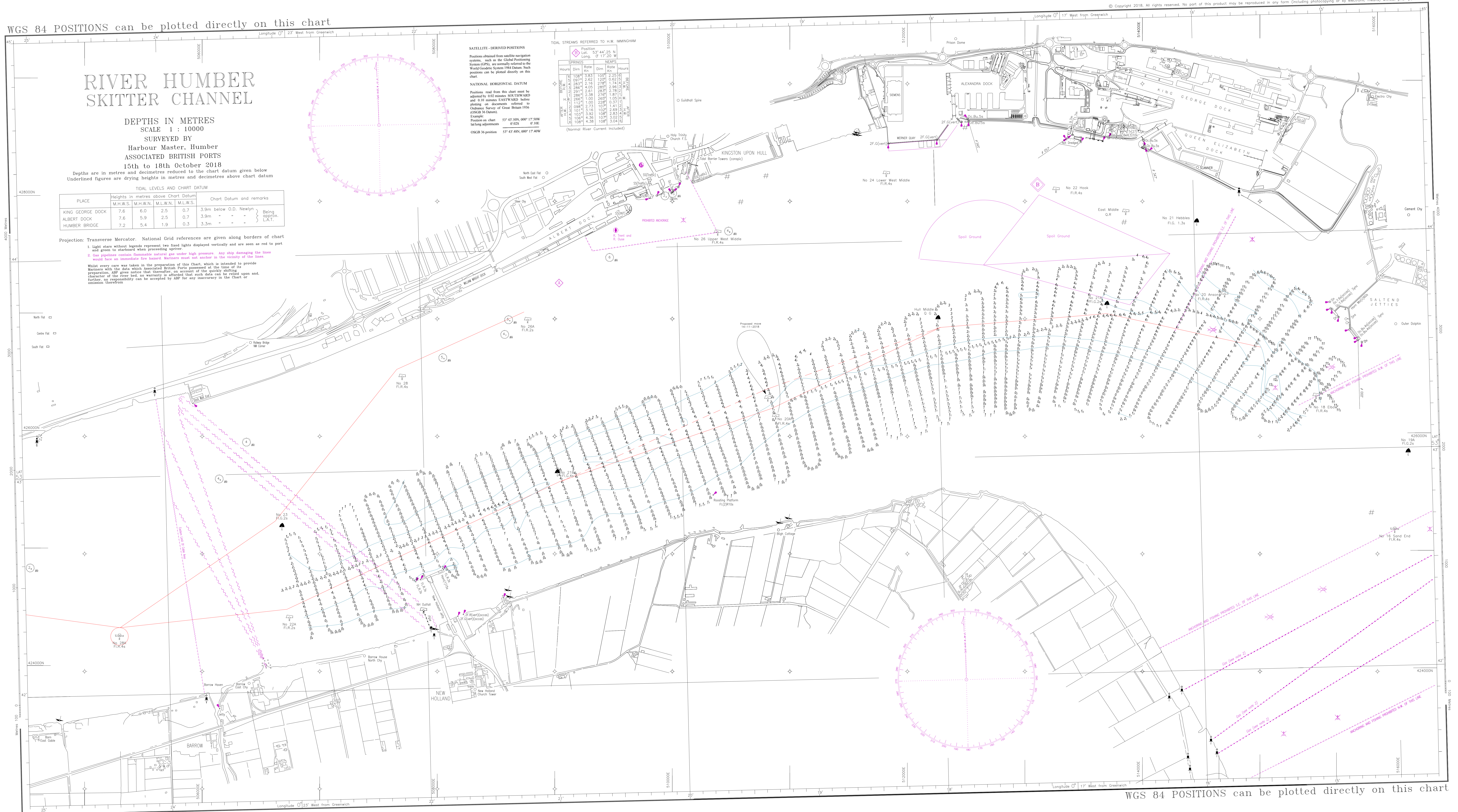
### NATIONAL HORIZONTAL DATUM

Positions read from this chart must be adjusted by 0.02 metres SOUTHWARD and 0.10 metres EASTWARD before plotting on documents referred to Ordnance Survey of Great Britain 1956 (OSGB 36 Datum).  
Example:  
Position on chart 53° 47' 50N, 000° 17' 40W  
In/long adjustments 0.02S 0.10E  
OSGB 36 position 53° 47' 48N, 000° 17' 40W

TIDAL STREAMS REFERRED TO H.W. IMMINGHAM

SPRINGS		NEAPS	
Hours	Dirn	Dirn	Rate
06	108°	3.83	105°
09	107°	2.82	125°
12	283°	2.16	278°
15	286°	4.28	289°
18	201°	2.61	285°
21	266°	2.38	276°
24	269°	1.00	226°
03	088°	2.73	107°
06	101°	3.16	102°
09	108°	4.36	107°
12	108°	4.38	108°
15	108°	4.38	108°
18	108°	4.38	108°
21	108°	4.38	108°
24	108°	4.38	108°

(Normal River Currents Included)



WGS 84 POSITIONS can be plotted directly on this chart